

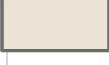

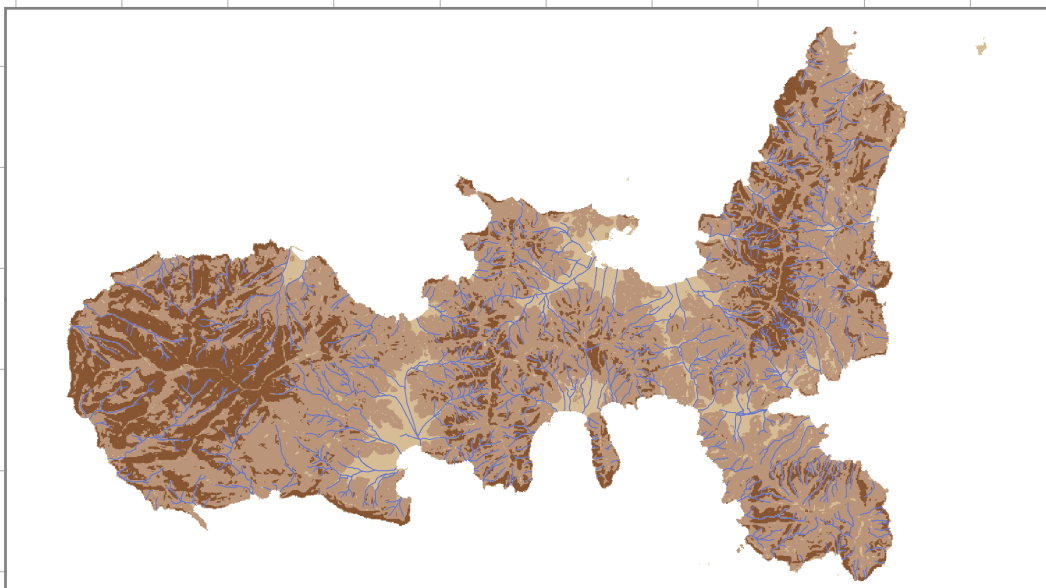


tavola 2

**Aggregazione del paesaggio
per classi morfologiche**

scala 1:250.000

-  elevata acclività (pendenza > 25%)
-  media acclività (pendenza 5% - 25%)
-  bassa acclività (pendenza < 5%)
-  reticolo idrografico



Fonte

Provincia di Livorno, SGP Cartografia, strato informativo di base: Modello Digitale del Terreno (DTM), reticolo idrografico